

Efficient operations through smart chemical stock management

Thank you for joining.
We will start in a few moments.

If you have trouble with the audio, try refreshing your browser or choose the "Flash" option on the left side of your screen. To optimize your webinar experience, please use Google Chrome.



The first choice in chemistry for water intensive industries

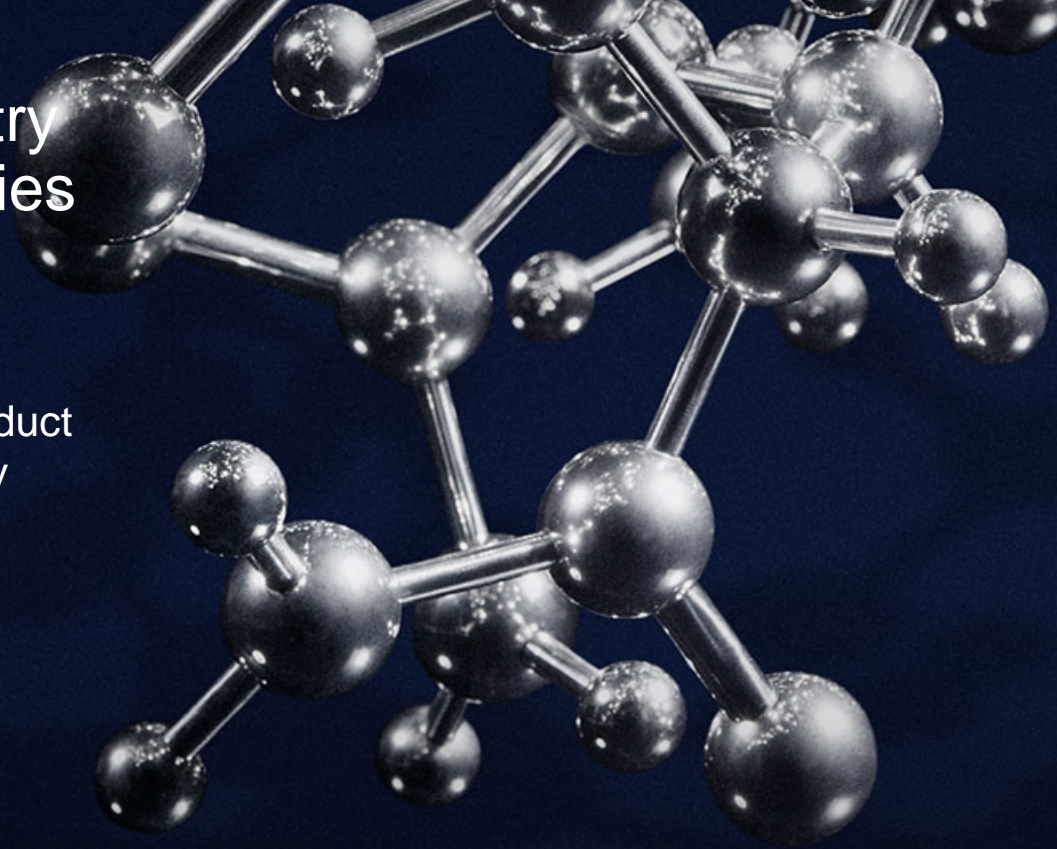
Expertise, application know-how and
chemicals that improve customers' product
quality, process and resource efficiency

REVENUE:

EUR 2.4 billion

EMPLOYEES:

4,800



Webinar hosts



Monika Epenstein

Marketing Manager,
Digital & SMART



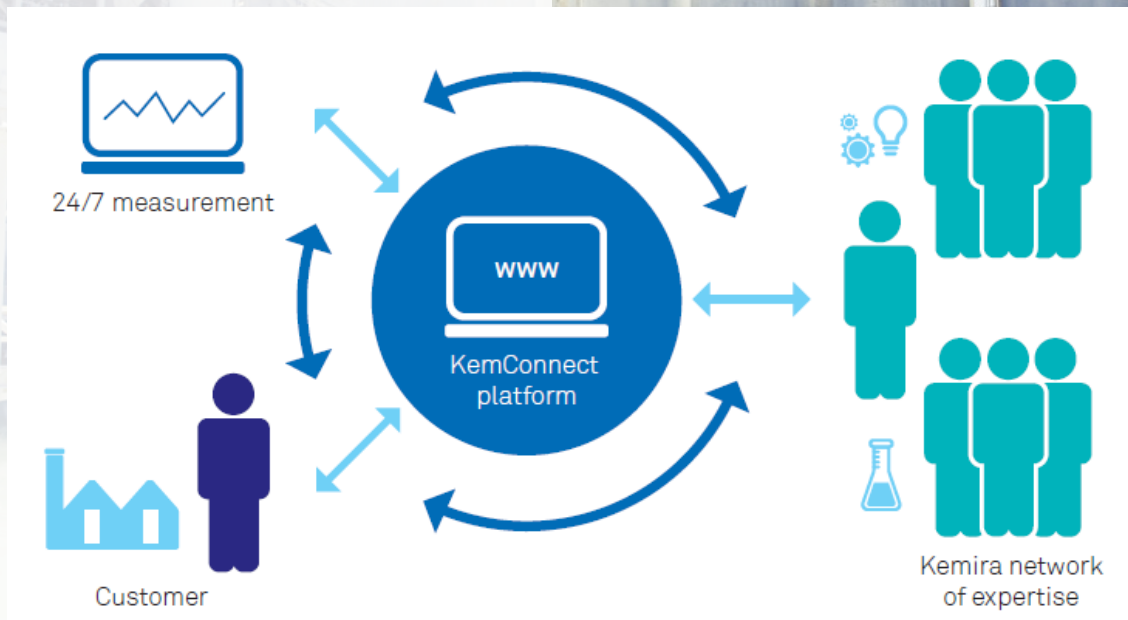
Jussi Ruotsalainen

Senior Specialist, Application
Development & SMART

Agenda

- Kemira KemConnect™
- Vendor managed inventory
- Common challenges & solutions
- Customer cases
- The future of smart chemistry

The right mix of chemistry expertise and smart technologies



Kemira KemConnect™

THE FEATURES



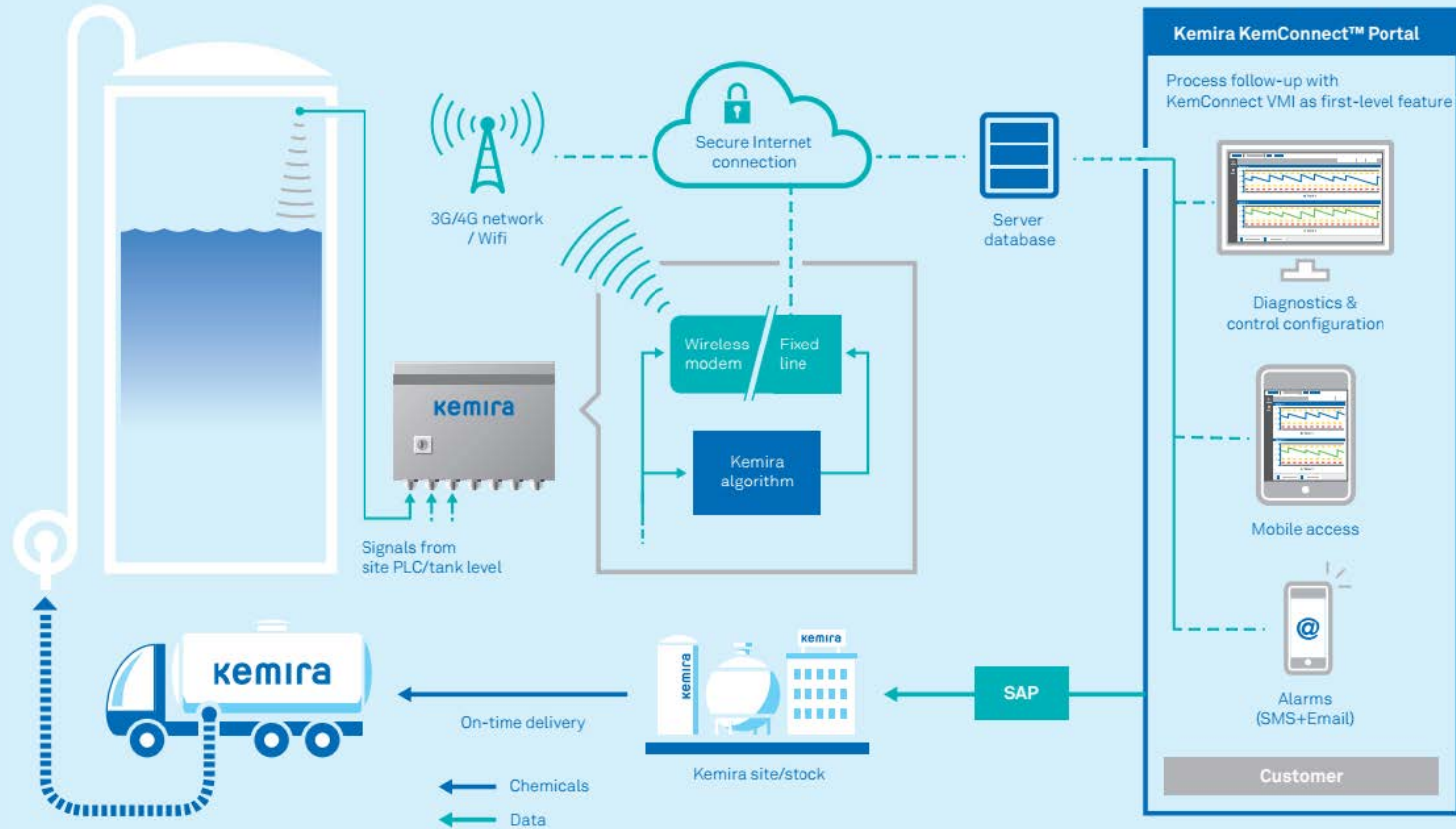
- Real-time smart process management platform
- KPI reports & user-defined dashboards
- Flexible set of data interfaces
- Kemira & customer collaboration tool
- Secure access by authorized persons
- Alarms & reporting via SMS and email
- Browser based access through any devices

Precision. Smarter processes. Peace of mind.

- Reduced response time
- Cost-efficient chemical usage
- Improved process performance
- Increased process visibility



Kemira KemConnect™ VMI - Vendor Managed Inventory



Common challenges & solutions



Common challenges

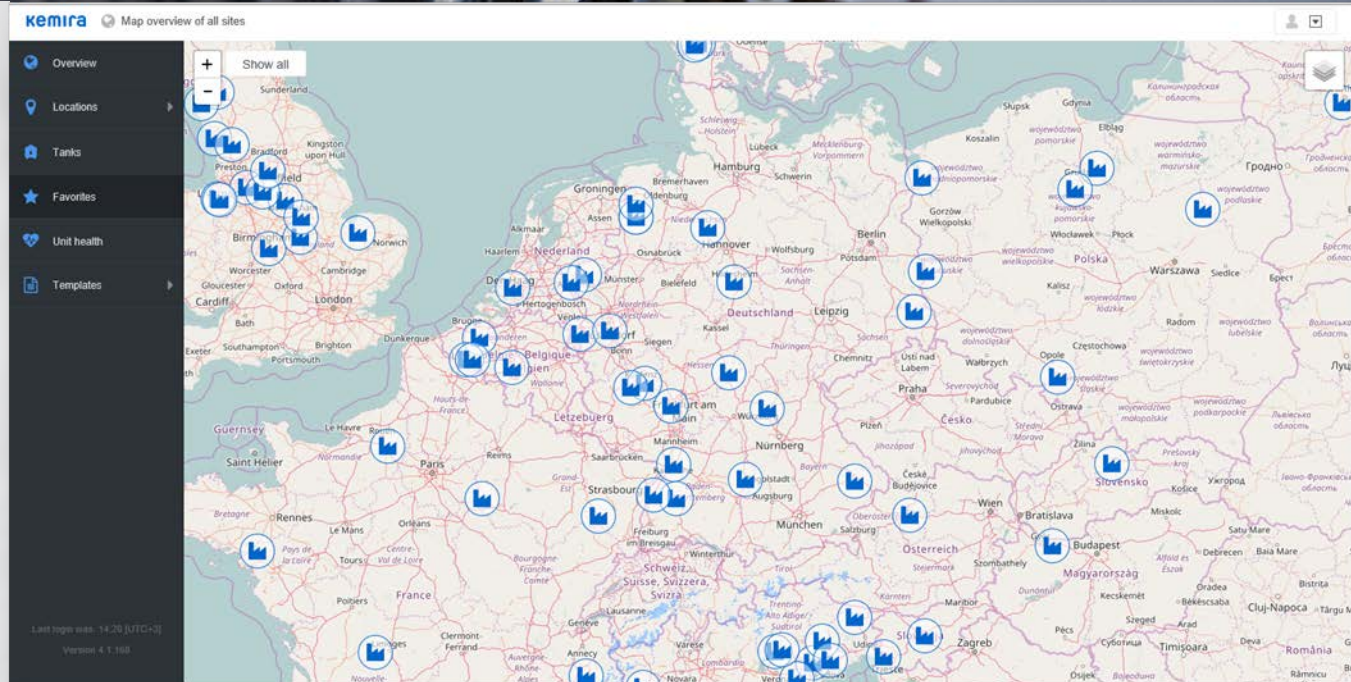
- Challenges in stock-keeping
- Continuous monitoring required to keep orders on-time
- No total view of stock status
- Excessive manual work
- Lack of treatment application insight on chemical consumption



Solution: sites overview

Geographical view

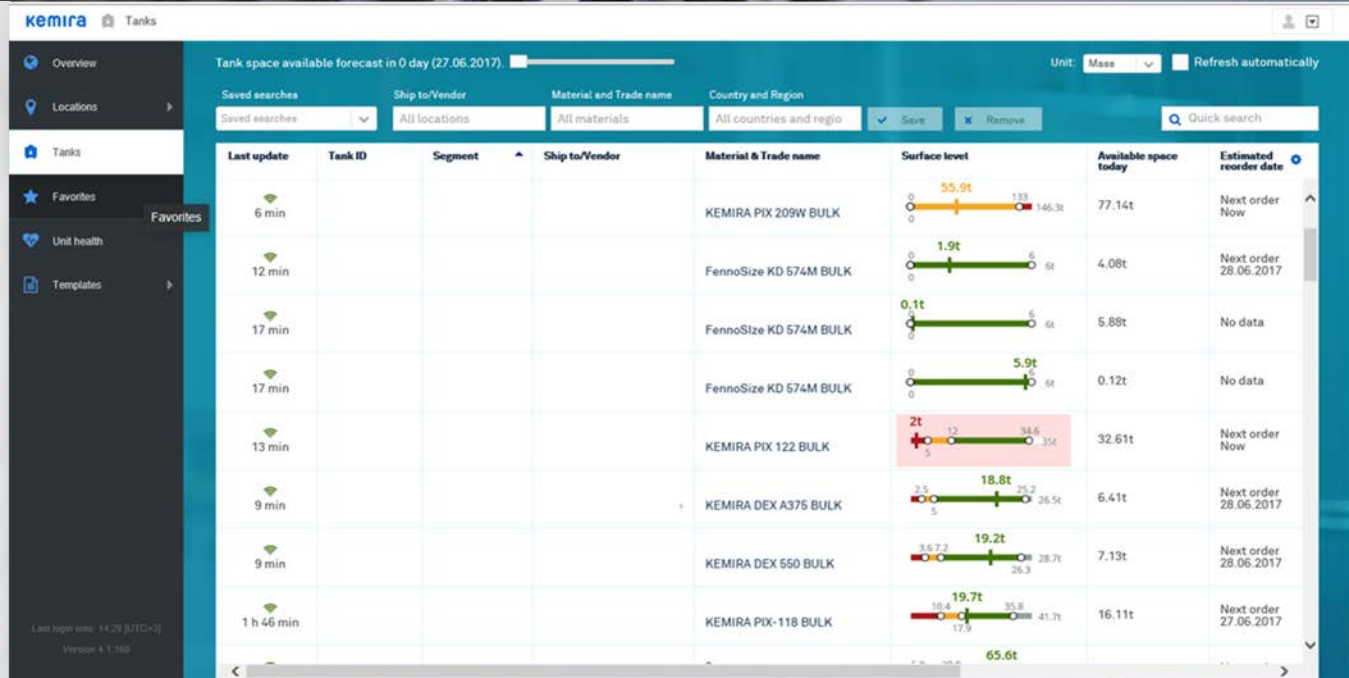
- Visibility of total chemical stock status
- Visual notes on threshold levels



Solution: tank overview

Summary view

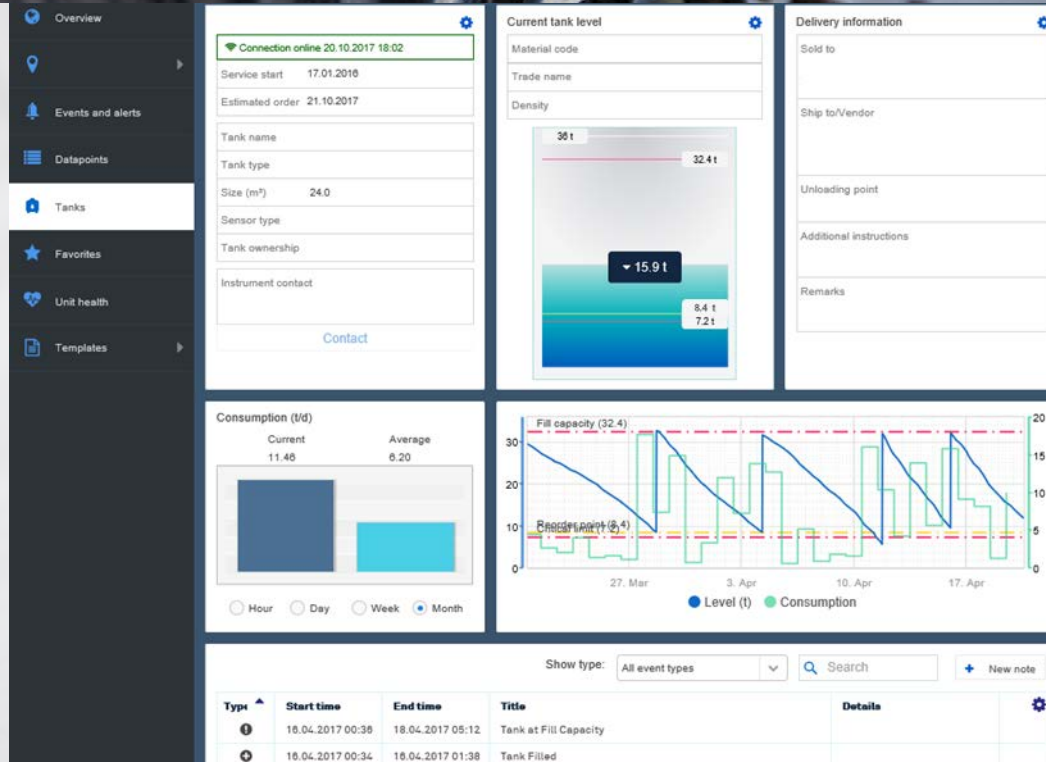
- Each tank level status
- Delivery notes
- Personally modified key parameters



Solution: specified tank details

Detailed view

- Current level
- Level thresholds
 - Reorder management
 - Notifications
- Average consumption
- Tank events listed (notes possibility)
- Adjustable time range of the data

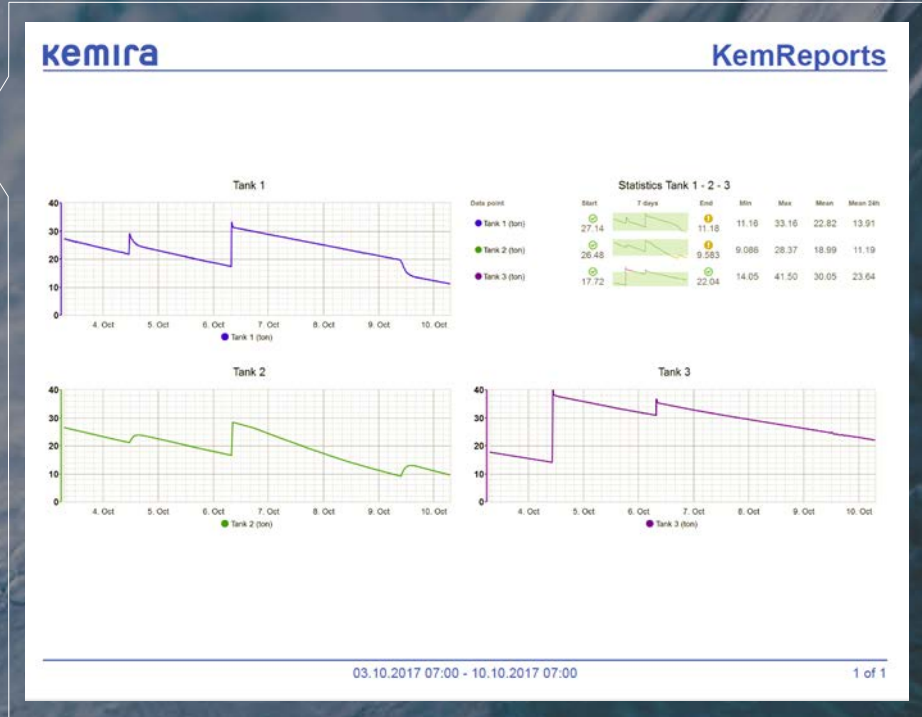


FEATURE OVERVIEW

The confidence of knowing – empowered by data

The KemConnect VMI increases communication via

- Automatic reporting
- Automatic notifications
- Events on online platform



Customer cases



Biogas plant process enhancement

Bioenergy company,
Denmark

Full service of customer
chemical stock
management, including
monitoring, reordering
and logistics.

Customer benefits:

- On-time deliveries
- Decreased admin work
- Peace-of-mind



Power plant incinerator flue gas scrubber effluent pH control

Energy company,
Finland

Full service of customer
chemical stock
management, including
monitoring, reordering
and logistics.

Customer benefits:

- Prompt replenishment during rapid consumption changes
- Maintaining stock at required level



Municipal wastewater treatment plant

Municipal wastewater treatment plant, UK

Full service of customer chemical stock management, including monitoring, reordering and logistics.

Customer benefits:

- On-time deliveries
- Optimal dosage during major fluctuations in demand
- Decreased admin work
- Process optimization

Next target:

- Automatic phosphorus control



Phosphorus precipitation

Customer benefits:

Peace of mind

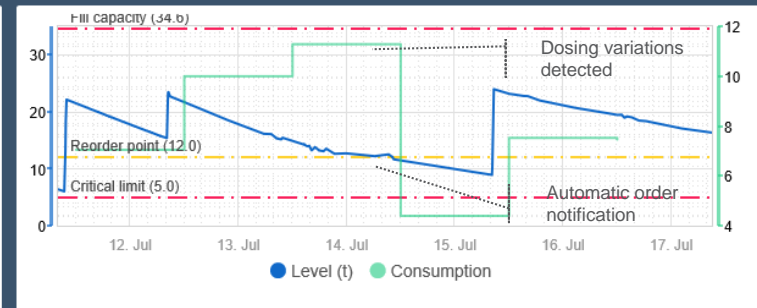
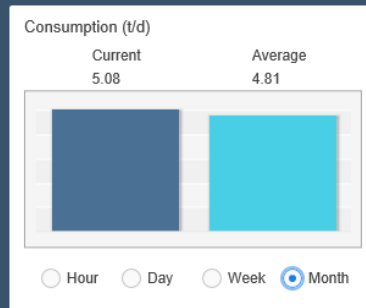
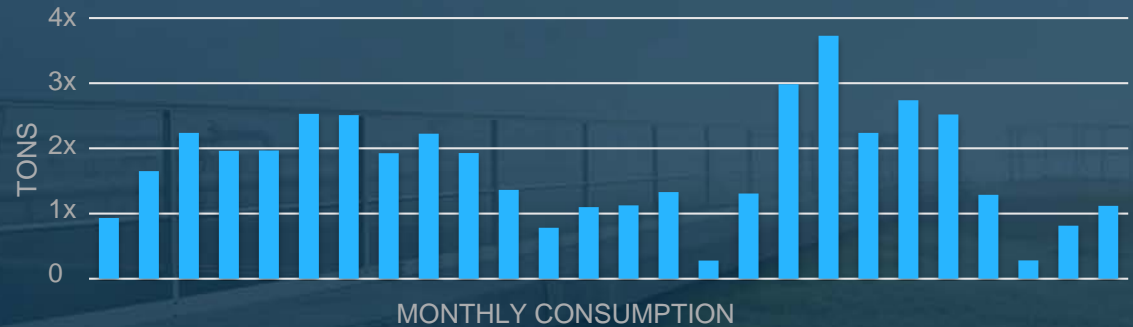
→ Stock secured and stabilized in major consumption variance

Savings in administrative work

→ Kemira proactively manages stock with less POs required

Optimization of dosing

→ Saving by customer when excess dosing avoided



What is the most important smart stock management feature for you?



A close-up, low-angle shot of a line of penguins standing on a snowy beach. The penguins are mostly white with dark wings and heads, and they are all facing towards the right. The background is a soft, out-of-focus blue sky. The overall mood is serene and natural.

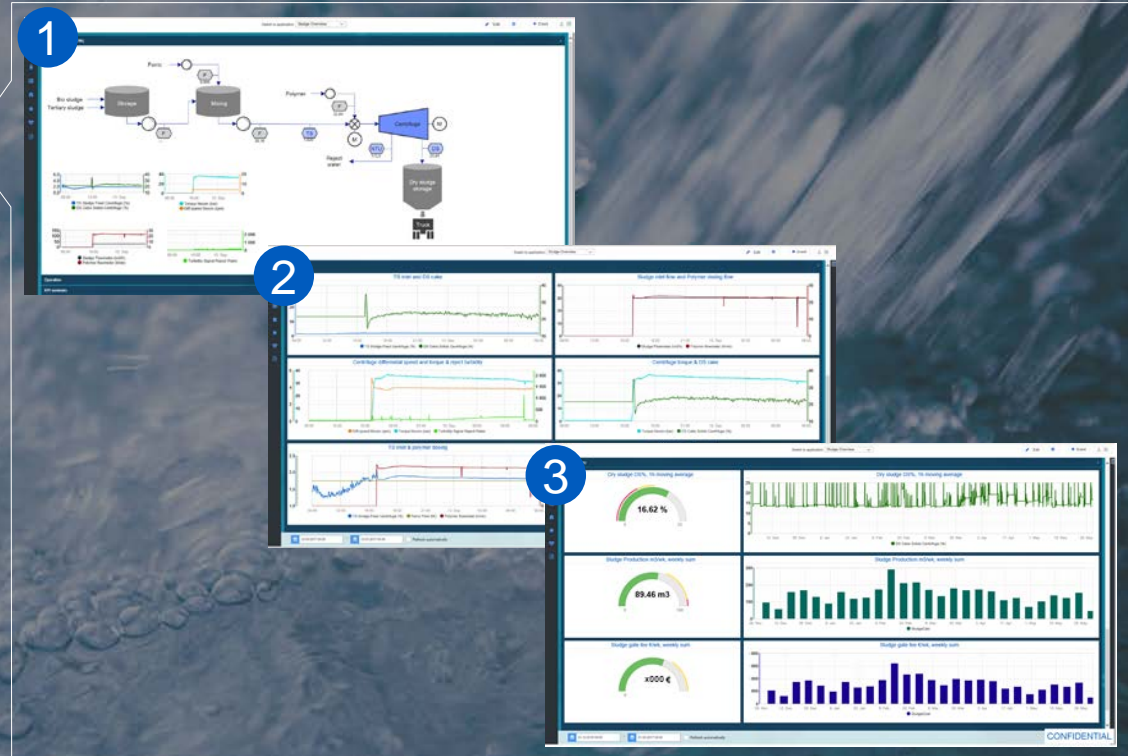
The future of smart chemistry

kemira

Smart sludge dewatering

Application monitoring,
powered by Kemira
KemConnect™

1. Operational status at a glance
2. Long-term online data for optimization and troubleshooting
→ application specialist consultancy
3. Tailored performance and OPEX KPI's



Where would smart chemistry help you the most? Choose one.



Questions and answers

Have a question? Ask our experts by clicking the chat icon on the bottom left of your screen.

Thank you

Thank you for joining and for your participation.

Please provide your feedback on the next screen to let us know about your experience and if you have improvement suggestions for our future webinars.

In case you have any further questions, don't hesitate to contact our experts.



Monika Epenstein

monika.epenstein@kemira.com



Jussi Ruotsalainen

jussi.ruotsalainen@kemira.com